

Martin

Levelling Components



USER MANUAL

Martin

Levelling Components

Martin Levelling Components si è specializzata nella produzione di componenti di livellamento realizzando una linea prodotto unica nel suo genere per la vastità dei modelli che mirano a soddisfare le richieste di tutti i settori industriali.

L'azienda Martin S.p.A. si sviluppa su una superficie globale di 7.000 mq rispettivamente ripartita in:

- **REPARTO PRODUTTIVO**
Composto da 60 macchine CNC di ultima generazione, il tutto coadiuvato dalla più recente tecnologia Industria 4.0
- **REPARTO STAMPAGGIO**
Dispone di numero 2 consociate per stampaggio con presse a iniezione B.M.B, FABES, G.B.F per lo stampaggio di plastica e gomma.
- **MAGAZZINO**
Logistica e confezionamento.
- **UFFICI**
Tecnici, Commerciali ed Amministrativi (500 mq).

Martin oltre alla copertura del mercato nazionale, esporta in più di 80 paesi ed è in grado di servire clienti in tutto il mondo.

Martin SpA

Martin Levelling Components has specialized in the production of levelling components. The range is characterized by a variety of models, which granting maximum flexibility, is focused to fulfill the requirements of the whole industry.

The company Martin S.p.A. spreads over a global area of 7,000 square meters respectively divided into:

- **PRODUCTION DEPARTMENT**
Composed of 60 latest generation CNC machines, all supported by the latest Industry 4.0 technology.
- **MOLDING DEPARTMENT**
It has two subsidiaries with injection molding machines B.M.B, FABES, G.B.F for molding plastic and rubber.
- **WAREHOUSE**
Logistic and assembly.
- **OFFICE**
Technical, Commercial and Administrative (500 sqm).

Martin in addition to covering the national market, exports to more than 80 countries and is able to serve customers worldwide.

Martin SpA

INDUSTRY 4.0

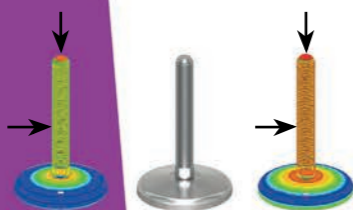
▶ STAMPAGGIO GOMMA
▶ RUBBER MOLDING



▶ STAMPAGGIO PLASTICA
▶ PLASTIC MOLDING



▶ MAGAZZINO
▶ WAREHOUSE



▶ LOGISTICA
▶ LOGISTICS



▶ UFFICI
▶ OFFICE



Martin



SYNERGY 1

POWER TRANSMISSION
HYDRAULICS
PNEUMATICS
LINEAR TECHNOLOGY
AND MORE...

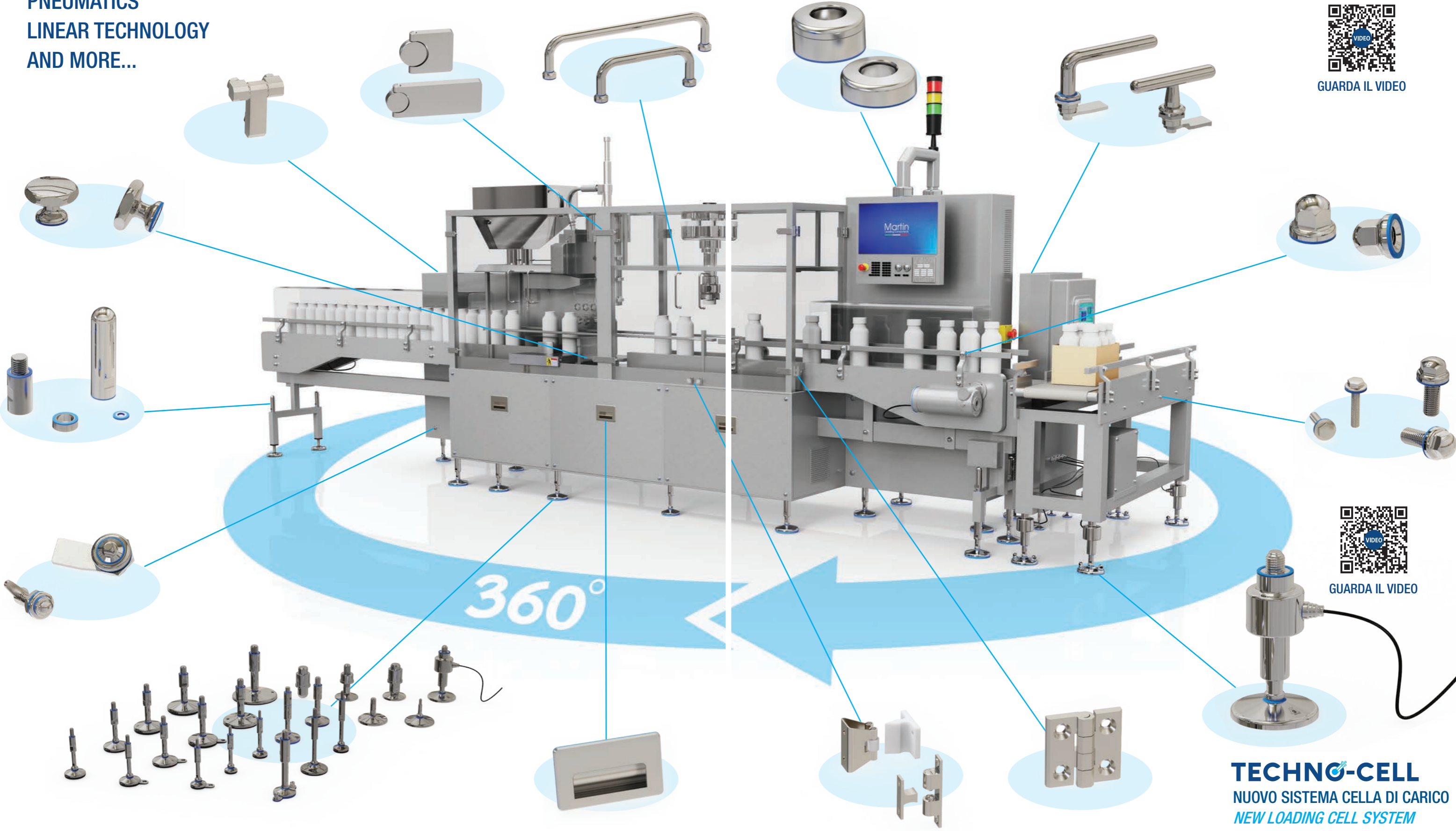


Martin

Levelling Components



GUARDA IL VIDEO



360°



GUARDA IL VIDEO

TECHNO-CELL
NUOVO SISTEMA CELLA DI CARICO
NEW LOADING CELL SYSTEM



SYNERGY 2

STANDARD RANGE
FOR ALL PRODUCTION LINES IN ALL SECTORS



Martin
Levelling Components



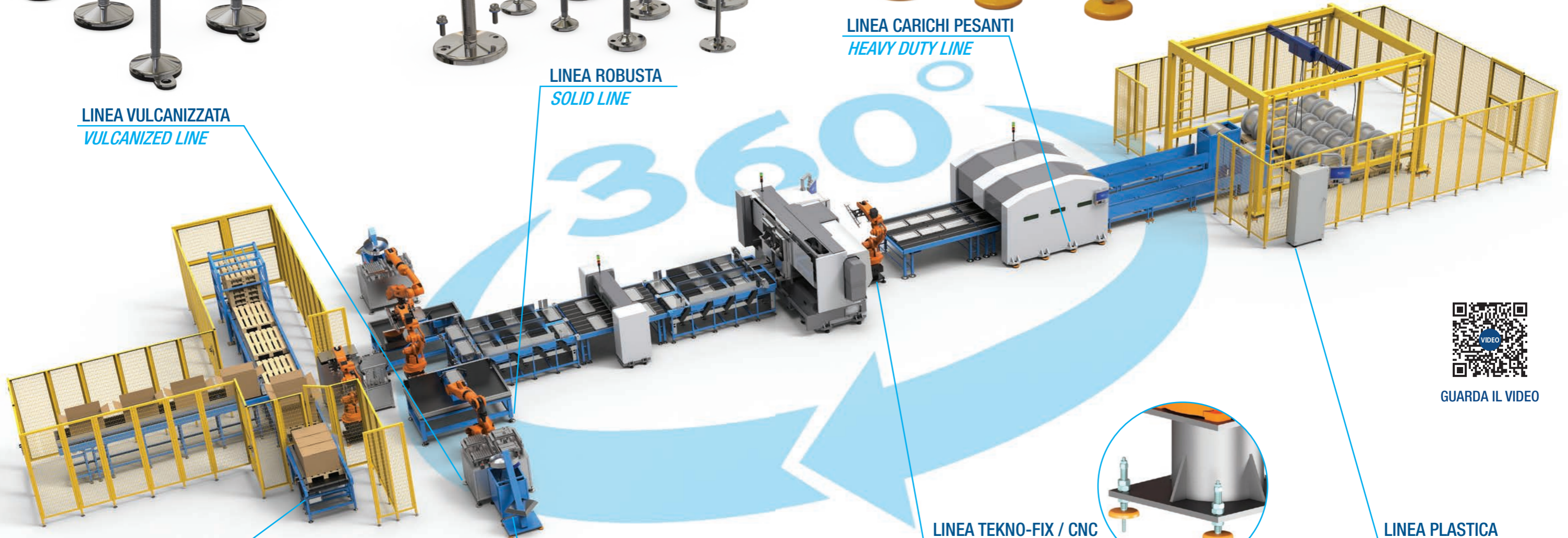
LINEA VULCANIZZATA
VULCANIZED LINE



LINEA ROBUSTA
SOLID LINE

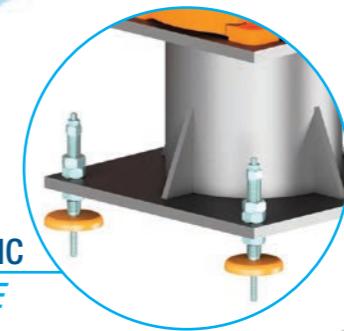


LINEA CARICHI PESANTI
HEAVY DUTY LINE



LINEA ANTIVIBRANTE
ANTI-VIBRATION LINE

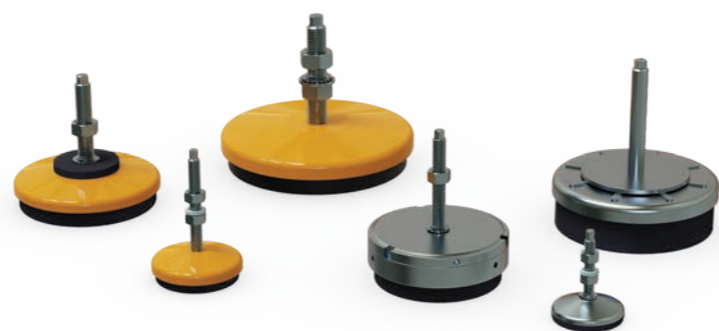
LINEA TEKNO-FIX / CNC
TEKNO FIX / CNC LINE



LINEA PLASTICA
PLASTIC LINE



GUARDA IL VIDEO



SOME OF OUR CUSTOMERS

ALCUNI DEI NOSTRI CLIENTI

WET INDUSTRIES



DRY INDUSTRIES



CERTIFICATIONS

QUALITY



LINEA PLASTICA
PLASTIC LINE



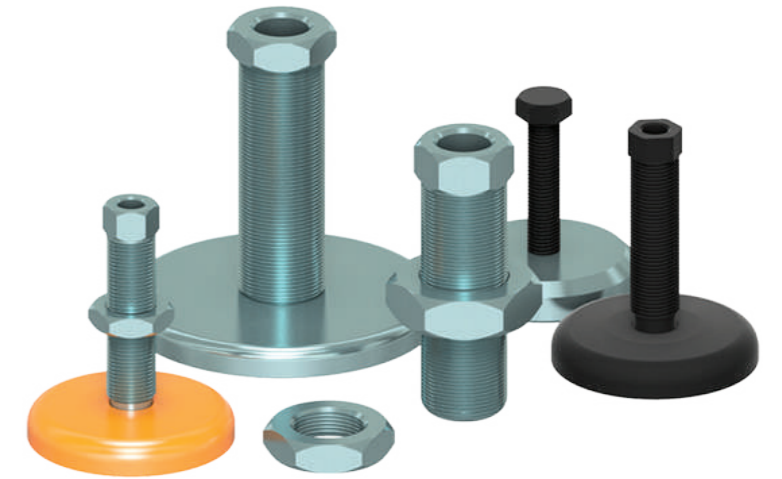
LINEA ACCIAIO INOSSIDABILE
STAINLESS STEEL LINE



LINEA ACCIAIO
STEEL LINE



LINEA TEKNO-FIX
TEKNO-FIX LINE



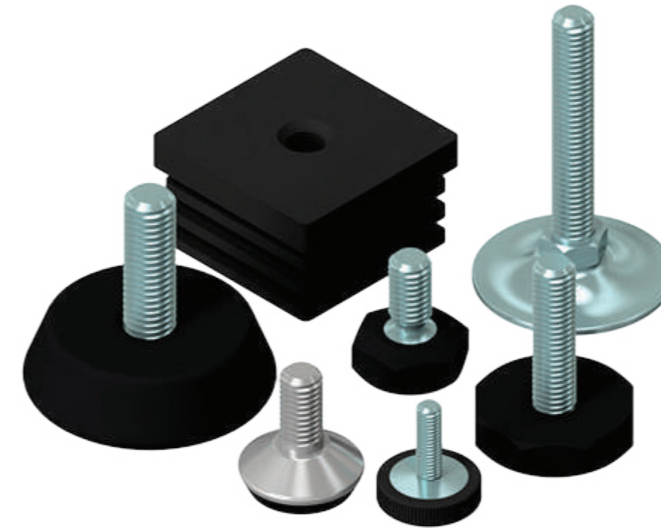
LINEA IGIENICA 3-A
HYGIENIC 3-A LINE



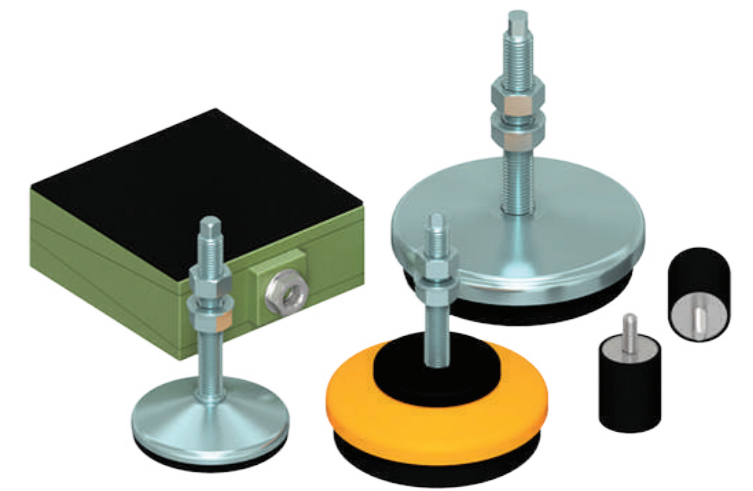
LINEA USDA
USDA LINE



LINEA MINI
MINI LINE



LINEA ANTIVIBRANTE
ANTI-VIBRATION LINE



ACCESSORI INOX
STAINLESS STEEL ACCESSORIES



LINEA STAMPATA
PRESSED LINE



PACKAGING

BEVERAGE



BOTTLING



FILLING



LABELLING



FOOD

PASTA



PIZZA



BAKERY



DRYERS



MIXERS



CONVEYORS



PLASTIC



STAINLESS STEEL



ACCESSORIES



STAMPED



CONVEYORS



PLASTIC



STAINLESS STEEL



ACCESSORIES



STAMPED

FISH - MEAT PROCESSING



WATER PLANT



MILK PLANT



SLAUGHTER HOUSE



BREWING



DAIRY



TANKS

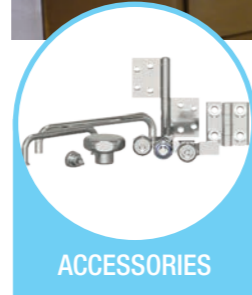


CONVEYORS

INDUSTRIAL KITCHENS



SUPPORTS



ACCESSORIES

CHEMICAL



COSMETICS



PHARMACEUTICAL



PLASTIC



ACCESSORIES



TEKNO HYGIENIC



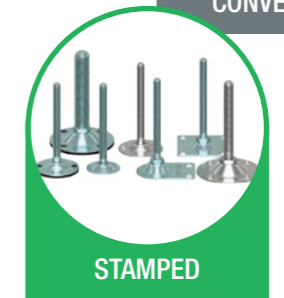
STAINLESS STEEL



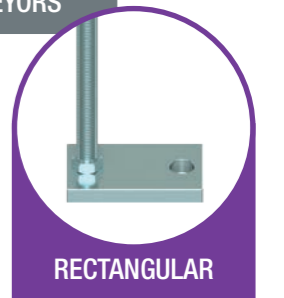
MATERIAL HANDLING



CONVEYORS



STAMPED



RECTANGULAR

AUTOMOTIVE



STAMPED



RECTANGULAR



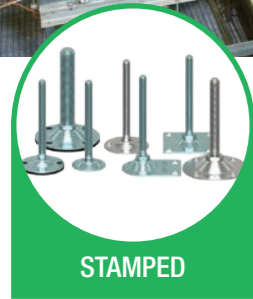
STEEL



TEKNO FIX

MACHINERIES

ROBOTS - PALLETIZERS



STAMPED



RECTANGULAR



STEEL

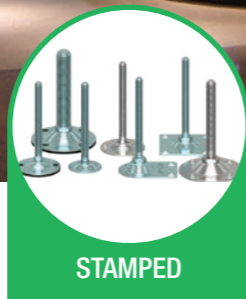


TEKNO FIX

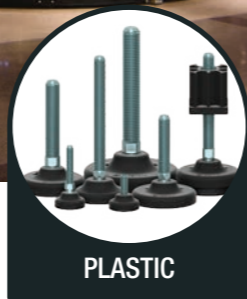


ANTI VIBRATIONS

AIRPORTS



STAMPED



PLASTIC

ELECTRICAL ENCLOSURES



PLASTIC



STAINLESS STEEL



ROTATING BRACKET



ACCESSORIES



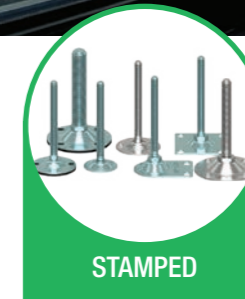
WATER CUTTING



PLASMA CUTTING



LASER CUTTING



STAMPED



PLASTIC



STEEL



TEKNO FIX



ANTI VIBRATIONS

PAPER - TOBACCO



GLASS - WOOD WORKING



SCALES



INJECTION



COATING



CNC - LATHE - DRILLING - MILLS - PRESS - ETC.



METAL WORKING



CLOTHING - TEXTILE



TRANSFERS



PVC - ALUMINIUM PROFILE



MISCELLANEOUS

WHITE INDUSTRY

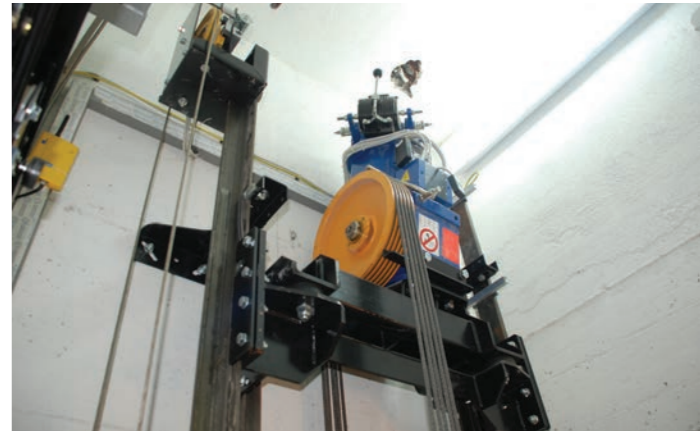


MINIATURE

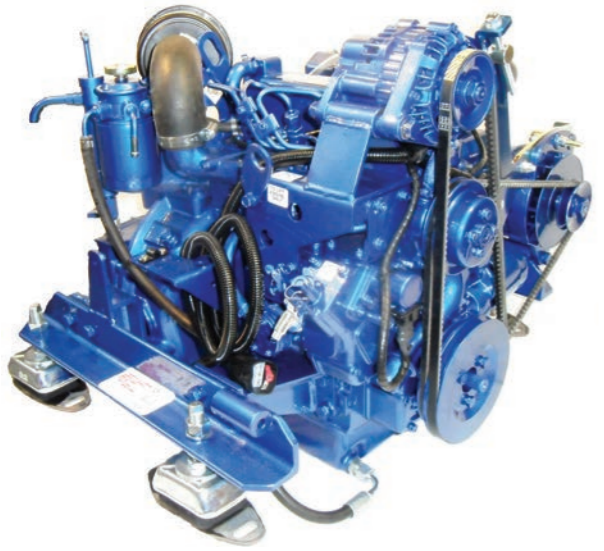
STRUCTURE - SCAFFOLD



BUILDING - ELEVATOR



VIBRATION - MARINE



ANTI VIBRATIONS

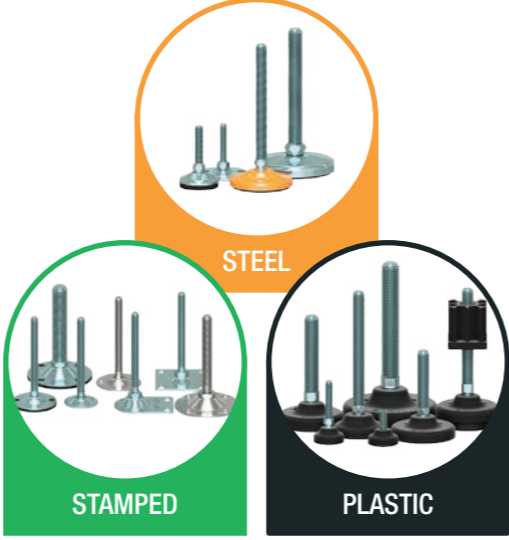
MOBILE HOMES



POOLS - GAMES



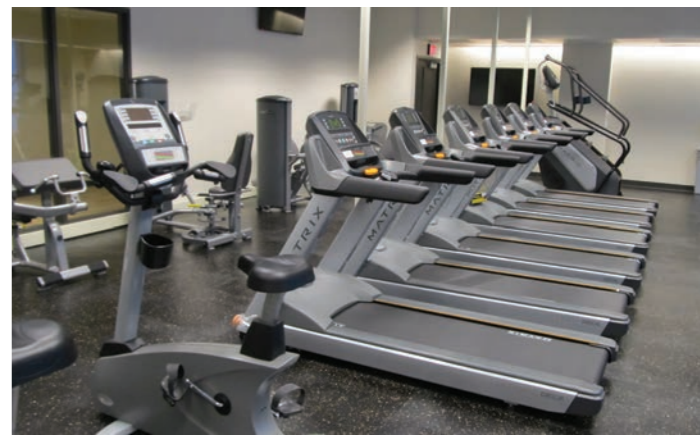
GREEN ENERGY



FUN PARKS



WELLNESS EQUIPMENT



Certificazioni
Certifications



Martin
Levelling Components

MARTIN spa

Via Cave, 1 • 25050 Provaglio d'Iseo (BS)

Tel. +39 030 9823625 • Fax +39 030 9882547

Info Italia: commerciale@martinlevelling.it

Export dpt: info@martinlevelling.it

